

**Application for
Community Watershed Stewardship Grant
2005-2006**

Albert Kelly Park (S.W. Portland) Restoration

**Submitted by
Bridlemile Creek Stewards
May 10, 2005**

Authors:

Steve Mullinax (steve.mullinax@alum.mit.edu, 503.768.9065)

Greg Schifsky (gregsch@hevanet.com, 503.246.2714)

Application

Community Watershed Stewardship Grant Program, 2005-6

Part A: General Information

Project Title: Albert Kelly Park Restoration

Project Coordinators: Greg Schifsky & Steve Mullinax

Organization/school name: Bridlemile Neighborhood Creek Stewards (also referred to in this grant application as Bridlemile Creek Stewards, or BCS.)

Mailing Address: 4131 S.W. Lee St.

City: Portland

State: OR

Zip: 97221-3667

Telephone (day/evening): 503.246.2714 (Greg), 503.768.9065 (Steve)

Email: gregsch@hevanet.com, steve.mullinax@alum.mit.com

Fiscal Agent: Southwest Neighborhoods, Inc (SWNI) Tax ID number of fiscal agent: 93-0717013

Type of Project (check all that apply):

Cleanup

Interpretive signage

Enhancement Publication

Monitoring

Education

Revegetation

Restoration

Site maintenance

Special Event

Other (explain):

Amount requested from CWSP Grant \$5,000 (Maximum available is \$5000)

Funding from other sources \$20,950

Total project cost \$25,950

Is this project a multi-year project? Yes (year 3 of 3)

Project year 3:

Estimated Start Date: 1 July 2005 Estimated completion date: 30 June 2006

Completion of project year 3 estimated 30 June 2006. Monitoring four times per year, 2006-2008.

Part B: Project Location

Location of project site (closest street address): Albert Kelly Park, SW Portland, see map.

Attached map: Albert Kelly Park Location

Name of immediately impacted water body: Unnamed Fanno Creek Tributary

Check Watershed:

Balch Creek

Fanno Creek

Tryon Creek

Columbia Slough

Johnson Creek

Willamette River

Site photos: Overview of site in attached aerial photo, titled "Albert Kelly Park, Restoration Site". Pre-restoration condition of site for this grant period shown in attached photos from May 3, 2003. Additional site photos, along with documentation of work history on the site are available from the Albert Kelly Park Creek Restoration web page, <http://www.vonsalza.com/akcr/>, maintained by Victor von Salza.

Part C: Project Proposal

Section I: Project Summary

Site Description: The site is a streamside buffer on an unnamed tributary of Fanno Cr. (See attached maps: Albert Kelly Park Restoration Site, and Albert Kelly Park Neighborhood.) The surrounding area of the park is mowed grass, used for recreation. Facilities include children's playground equipment on the E. and a soccer field on the W. The stream enters a culvert at the downstream end of the restoration site. The upper two-thirds of the site (Area 1 on the site map) is wooded, with Douglas fir dominant. Understory non-native plants include cherry, English holly, hawthorn, ornamental plums and English laurel. Invasive English ivy and Himalayan blackberry are dominant groundcovers in the remaining uncleared area. The lower third of the site (Area 2, 13,800 sq. ft.) has sparse trees and shrubs. Soils within areas 1b and 1c are impacted by demand trails, exposing bare soil to erosion. Silt, suspended solids, and dog feces run off, degrading water quality to Fanno Creek downstream.

The site is part of a contiguous stream reach which includes the River Renaissance mitigation project in the St. Andrew's Presbyterian Church parking lot (see neighborhood map). Below the site, the stream enters a culvert draining to the Fanno Creek mainstem. This grant complements the church mitigation project site, as well as the recent BES revegetation on Fanno Creek.

Project Description: 2005-6 is the third year of a proposed three-year restoration project. Area 1 is divided into areas 1a, 1b and 1c. (See restoration site map.)

In 2003-2004, invasive ground-cover removal was completed in area 2. Native trees and shrubs were planted to replace blackberry cover. Areas 1a (7,200 sq. ft.) and 1b (8,900 sq. ft.) were cleared of non-native groundcover and understory species and replanted under prior grants. Area 1c (10,100 sq. ft.) is proposed for revegetation in 2005-6. Revegetation will be done with appropriate native species, as reviewed and approved by Portland Parks ecologist Mark Wilson. Grant funding covers materials for temporary fencing to protect plantings in area 1c from foot traffic. Fencing will remain in place three to four years. After groundcover removal from area 1c, non-native trees felled earlier will be placed to create a barrier to foot traffic. Stream bank and upland stabilization using erosion control netting and logs available from this site. As with revegetation, stabilization measures will be extended to area 1c. Maintenance includes watering newly planted zones the first summer from about 1 June 2006 through the first week in September, 2006 and continued monitoring and removal of invasives.

Bridlemile Creek Stewards will install a temporary fence to protect plantings in area 1c.

Bridlemile Creek Stewards volunteers will continue maintenance in Hamilton Park. (Wooded area restored under 2001 and 2002 CSWG s.) Volunteers make periodic visits to the site to visually monitor turbidity, trash dumping, vandalism, health of plants and the positioning of erosion control devices.

Habitat and water quality benefits: Extension of tree canopy and replacement of invasive groundcovers enlarges the buffer, adds structural and plant species diversity, providing improved cover, nesting and feeding. Combined with revegetation of soil exposed by demand trails, improves filtering of runoff, reducing particulates and dog feces. Temporary fencing and felling understory non-native trees reduces foot traffic and attendant erosion and damage to vegetation. Moderates and buffers runoff volume. Removal of non-native plant ground cover ensures better medium for native plant seed. Provides a future seed bank of native plants and forest floor that will accommodate native forbs, grasses, trees and shrubs.

Educational components: Concerned neighborhood groups include Bridlemile and Hillsdale Neighborhood Associations, SW Trails and local school, religious and citizen groups. Educational focus is on the importance of watershed and habitat health, and the associated benefits of the restoration. This year we will extend education materials to motivate and inform homeowners on the benefits and methods of lot-scale restoration projects. We also convey the scope and purpose of the restoration in Albert Kelly Park, emphasizing the goal of establishing a healthy native plant community and the benefits of improved habitat and water quality. We educate neighbors and park users on project components, methods and schedule. We address removal of marked non-native trees; restrictions and/or changes to current uses; BES best practices, including fencing, and reduced access to wooded areas. Discussion is in progress with Bridlemile Elementary School staff to arrange speaking and field trips for students.

Outreach includes neighborhood and civic groups, door-to-door canvassing, articles in local newspapers, temporary signs in the park, email using BCS and NA lists, and neighbor contact lists from canvassing and prior projects. Our web presence includes the Albert Kelly Park Creek Restoration page (www.vonsalza.com/akcr/overview.html), the Bridlemile Creek Stewards page (home.comcast.net/~steve.mullinax/bridlemile/BCS.htm), and the "Your Creek Habitat" site (in progress at <http://www.vonsalza.com/akcr/ych/index.html>).

Section II: Community Partnerships

Bridlemile Creek Stewards project coordinators roles:

- Steve Mullinax and Greg Schifsky have eight years of practical experience in watershed restoration and have taken courses to complement this experience. They make their knowledge and experience available to interested citizen groups. Bridlemile Creek Stewards received the Green Heron Community Group Award from the Tualatin Riverkeepers in April, 2005. According to the award citation, Greg Schifsky and Steve Mullinax provide the dedicated leadership that enables the Bridlemile Creek Stewards to make a real difference in the headwaters of Fanno Creek.
- Overall planning and management of project, including assignments of volunteers and partners.
- Lead for public outreach, including prior notice to neighbors of BES and volunteer crew activities on-site, volunteer recruitment, solicitation of partner involvement.
- Organize monthly BCS meetings for project coordination and community outreach.
- Creation of outreach materials through volunteers and partners.
- Procurement of materials, supplies and plants.

Partners: Roles committed	
Partner	Role
Audubon Society of Portland	Event opportunities for tabling. Announcement of events.
BES Revegetation Crew (Darian Santner)	Follow-up with continued invasive removal and vegetation monitoring throughout this growing season and the remaining years of the project. If the survival falls below an acceptable percentage, consider interplanting. Darian anticipates BES crews being at the site 2-3 times per year as necessary. Be available to answer phone calls and attend some neighborhood meetings.
BES	Naturescaping coordinator assistance. Supply tools on loan. Tabling opportunities.
Clackamas County Extension Service	Director provides technical expertise and connection to OSU and state watershed agencies. Students monitoring Hamilton Park macroinvertebrates available for outreach to children and citizens in Albert Kelly Park. Training opportunities.
Bridlemile and Hillsdale Neighborhood Associations	Organize and promote contacts and education of neighbors, park users and interested organizations.
Portland Parks & Rec	Review plans for conformance with park maintenance procedures and best restoration practices. Provide technical advice on plant communities and plant choice for best adaptation; sources for erosion control materials.
SWNI	Fiscal agent. Administrative services. Publish notices and information. Liability insurance provider.
Tualatin Riverkeepers	Publicize work parties. Assist volunteer recruitment. Run newsletter articles about project. Facilitate links to other watershed stakeholders. Provide opportunities for tabling through events sponsored by TRK.
TRWC	Technical assistance (Kyle, Obruch) free plants from fisher gardens. Contacts with TB stakeholders. Contacts for resource opportunities.
Neighbors near park. Households near the park canvassed 2003-2004. Names and contact information on request.	Invasive removal, outreach, watering, refreshments for events.
Schools and student groups. (Past contributors include Lincoln HS, Wilson HS, Catlin Gable, Robert Gray MS, Bridlemile School, Boy Scouts, Brownies, Congregation Neveh Shalom. St. Andrews Church.)	Student volunteers for invasive removals and planting.
Local businesses. (Past contributors include Albertson s, Wild Oats, Hot Lips Pizza, New Seasons, Starbucks, Noah s Bagels, Slice of Heaven Pizza.)	Contribute refreshments for events.

Section III: Timeline (1 page maximum)

Note: BCS is Bridlemile Creek Stewards; BES is Portland Environmental Services Revegetation Program; TRK is Tualatin Riverkeepers; NAs are Neighborhood Associations.

Time-Frame	Description	Who
Aug., 05	Neighborhood Night Out for Bridlemile Neighborhood in Albert Kelly Park.	Bridlemile NA.
Sept-Oct., 05	Complete flyers, "Your Creek Habitat" web site, and table-top display. Distribute flyers.	BCS
Oct 05 June 06	Tabling community events.	BCS
July, 05 June, 06	Monthly work parties to remove invasive plants and install erosion control devices, Area 1c. Scheduled July-November, 2005, and January 2006. Two additional work parties to be scheduled February-June, 2006.	BCS
March, 06	Install temporary fence, area 1c.	BCS
Q3-Q4, 05	Use/install logs from felling of non-native trees for erosion control on banks. Install erosion control netting along stream banks.	BCS
Q1, 2006	Plant native plants, Area 1c. Approx. 800 shrubs & trees.	BCS
Q2, 2006	Watering newly planted natives.	BCS, neighbors
Q3, 05 Q2, 06	Educational outreach through tabling and Your Creek Habitat web site.	BES, TRK, BCS
2006-2008	Monitor site for new invasive growth, four times per year.	BCS

Section IV: Budget

BUDGET 2005 - 2006 Community Watershed Stewardship Grant

Activity/Expense	CWSP Funds			Total
Neighborhood outreach/education				
Print flyers	25			
Advertisement	125			
Table-top display	90			
Total outreach/education				240
Office Supplies	150			150
Plant Materials	2,725			2,725
Water	100			100
Irrigation equipment	100			100
Coordination Fees	600			600
Gas/mileage	185			185
Equipment/Fencing	300			300
Erosion Control Materials	600			600
Totals	5,000			5,000

Additional Expected Revenues (in-kind)

Volunteer hours:	Hours	Rate/hr.	Total	Contributors
Student volunteers	100	7	700	Catlin Gabel School, Girl Scouts, Boy Scouts, various school groups
Adult volunteers	200	14	2800	BCS, neighbors, St. Andrews, community groups.
Professional volunteers	600	25	15000	Greg Schifsky, Steve Mullinax, Victor von Salza, other BCS volunteers, SWNI.
Total volunteer value				18500
Materials (Erosion controls, plant materials)				750 Greg Schifsky, neighbors, parks.
Plant materials, literature				750 Tualatin River Watershed Council
Media resources				300 SWNI, TRK, Fans of Fanno Creek, SOLV, Ash Creek Press, Multnomah Village Post, Southwest Connection, The Oregonian, TRWC
Promotional items for tabling				100 BES
Web-hosting				50 Victor von Salza
Office supplies				300 SWNI, BCS volunteers.
Food & beverages				200 Community Businesses. Past contributors include Starbucks, Noah's Bagels, Natures or WildOats stores, New Seasons market, Albertson's.
Total in-kind				20950
Total budget				25,950

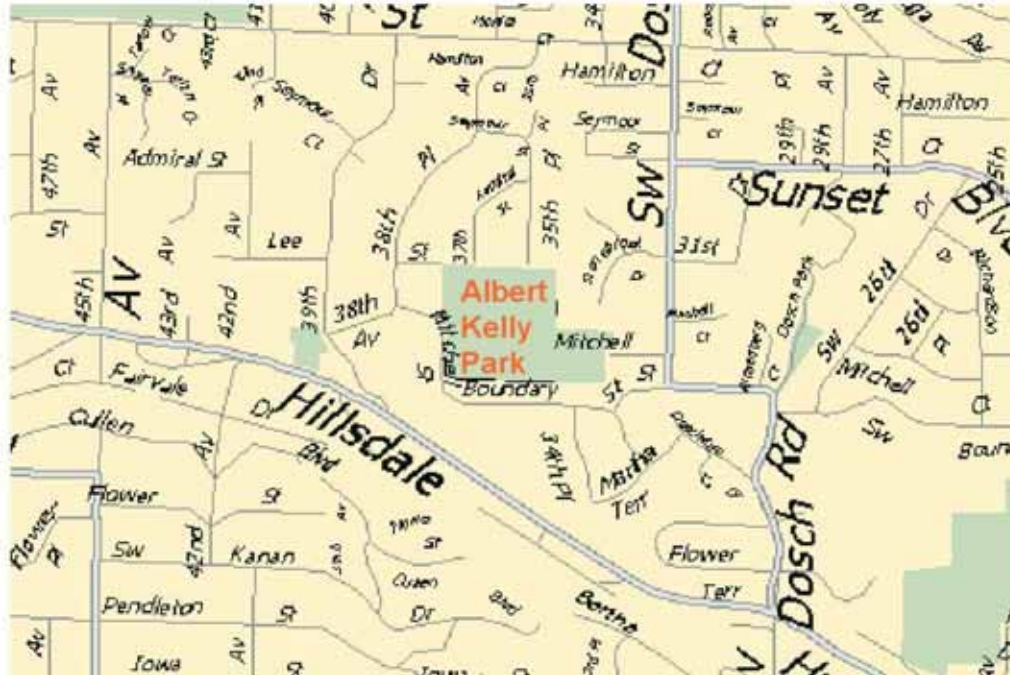
Exhibit A
Scope of Work
Community Watershed Stewardship Grant
Bridlemile Creek Stewards
5 May 2005

Reference CWSG grant application body for timeline and detailed roles and responsibilities.

Work includes:

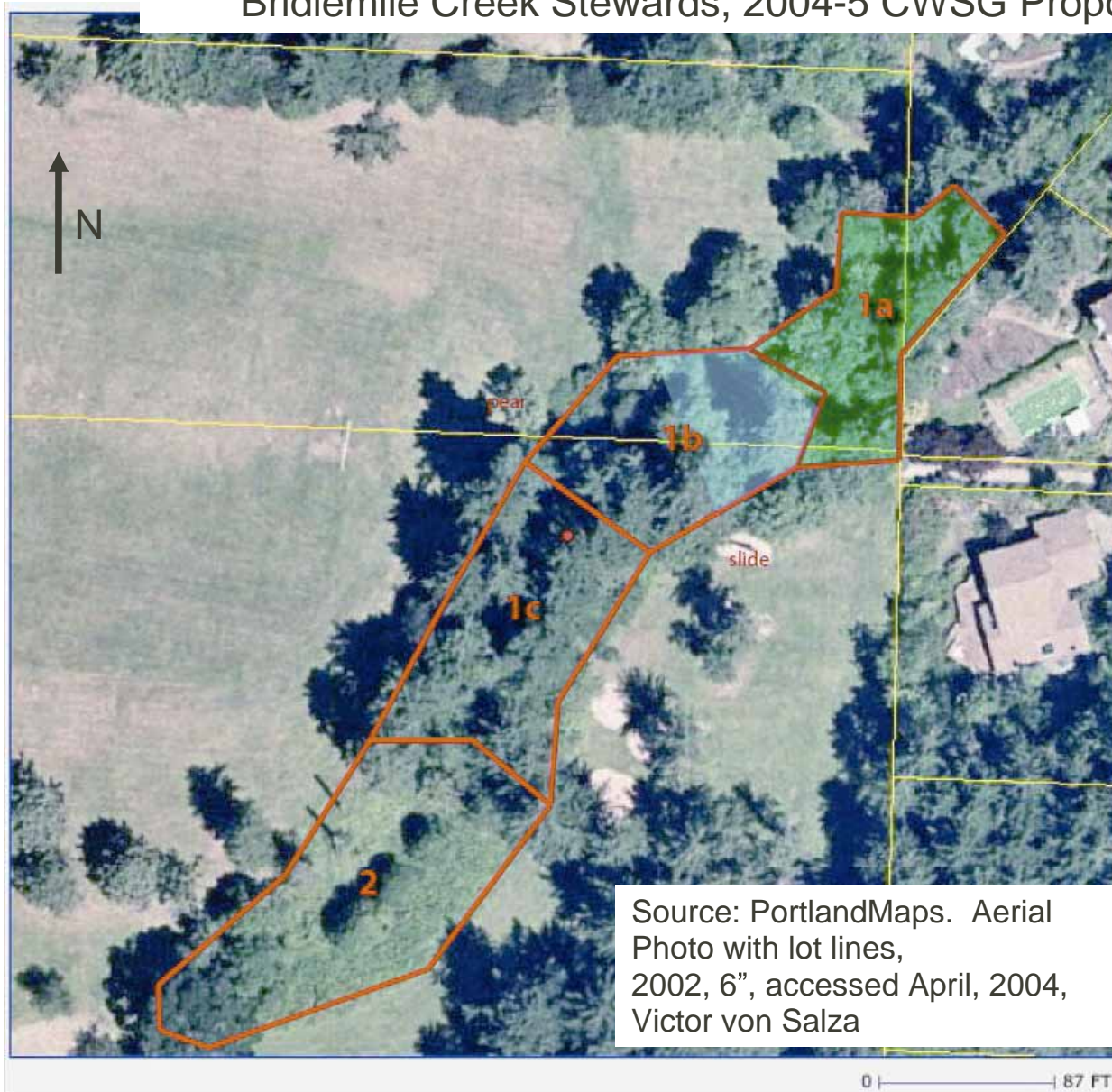
1. Hold at least eight work parties for invasive removal and/or planting. Currently six monthly events are scheduled, July 2005 through January, 2006. Additional events will be scheduled February through June, 2006. At each work party, provide education for neighboring residents, volunteers and participants on the importance of enhancing our riparian and upland areas to a more natural state. Foster a sense of neighbors helping neighbors in creek zones and the recruitment of new advocates.
2. We will create a set of outreach materials providing motivation and planning information on why and how homeowners should restore and maintain the habitat in their yards. Specific materials include: a web site (working title "Your Creek Habitat", draft at <http://www.vonsalza.com/akcr/yeh/index.html>); a table-top display which introduces lot-scale restoration and motivates viewers to visit the web site for more detailed information; a flyer for door-to-door handout, also intended to motivate homeowners toward restoration by visiting the web site.
3. Attend selected events to table with the display. We will survey event organizers such as BES, Tualatin Riverkeepers and Audubon Society of Portland to determine the most cost-effective events.
4. Distribute outreach flyers (see above) door-to-door in the Bridlemile neighborhood, focusing on streamside single-family homes.
5. The removal of invasive plant species in Albert Kelly Park. (Area 1c in attached map.)
6. Revegetation with native plant species in area 1c.
7. Stream bank and upland stabilization using erosion control netting and bio-bags in area 1c. Stream bank and upland stabilization of area 1c using logs available from this site.
8. Continued maintenance of areas in Hamilton Park and Albert Kelly Park areas 1b and 1c restored under previous CWSG grants. (Monitor for invasive regrowth, watering.)

Albert Kelly Park Location



Albert Kelly Park Restoration Site

Bridlemile Creek Stewards, 2004-5 CWSG Proposal



Estimated Area	
Area	sq.ft.
1a	7177
1b	8909
1c	10103
2	13823
Total	40013

Albert Kelly Park – Neighborhood



St. Andrew's Church
mitigation site

Proposed restoration
site



May 3, 2003 • Area 1c • 200° view looking north up creek from south side of Area 1c • SW Trail 1 crosses left to right



May 3, 2003 • looking north from center of above photo



May 3, 2003 • looking north from center of photo at left