

Property Tax Compression Facts & Figures



Josh Harwood, City Economist
City of Portland, Oregon

June 14, 2012



Things to Remember

- Three Factors Impact Property Taxes
 - Assessed Value = 1995 Property Value + 3% growth per year since then
 - Real Market Value = What Assessor believes you could reasonably receive were you to sell your home
 - Tax Rate = \$ per \$1,000 of Assessed Value



Things to Remember

- Taxes are paid on the Assessed Value (AV) vs. Measure 5 limits are on the Real Market Value (RMV)
 - Limit is \$10 per \$1,000 of RMV for General Government
 - Most places in Portland have levies totaling ~\$14 per \$1,000
 - Therefore, when AV is at least ~70% of RMV, compression occurs (i.e., taxes paid are less than what AV times the tax rates would yield)



Things to Remember

- First local option levies are compressed (currently include Children's Levy and Library Levy)
- After they reach \$0, each remaining permanent levy is compressed proportionally until limit is reached
- This calculation is done on each individual property in the state.



How Different AV/RMV Ratios Create Inequities

				Extended Gen. Gov. Tax*	Measure 5 Limit	Actual Taxes Paid
	RMV	AV	AV/RMV Ratio			
House #1	\$300,450	\$115,430	38%	\$1,616	\$3,005	\$1,616
House #2	\$300,020	\$164,080	55%	\$2,297	\$3,000	\$2,297
House #3	\$300,310	\$218,800	73%	\$3,063	\$3,003	\$3,003
House #4	\$300,220	\$251,130	84%	\$3,516	\$3,002	\$3,002

Example Property Tax Bill (Not in Compression)

VALUES:	LAST YEAR	THIS YEAR
MARKET VALUES:		
LAND	155,000	150,000
STRUCTURE	217,720	216,570
TOTAL RMV VALUE	372,720	366,570
TAXABLE VALUES:		
ASSESSED VALUE	178,610	183,960
PROPERTY TAXES:	\$3,902.19	\$4,006.90

Measure 5 General Government Limit =
\$3,666, so no compression

2010-11 CURRENT TAX BY DISTRICT:

MULTNOMAH ESD	76.03
PORTLAND COMMUNITY COLLEGE	46.56
PORTLAND PUBLIC SCHOOL	867.90
PORTLAND PUBLIC SD LOC OPTION	207.53
EDUCATION TAXES:	\$1,198.02
PORT OF PORTLAND	11.76
CITY OF PORTLAND	760.09
METRO	16.13
EAST MULT SOIL & WATER CD	17.26
MULTNOMAH COUNTY	720.99
CITY OF PORTLAND CHILD LOC OP	67.51
MULT CO LIBRARY LOCAL OPT TAX	149.08
PORTLAND FIRE/POLICE PENSION	437.60
URBAN RENEWAL - PORTLAND	445.67
GENERAL GOVERNMENT TAXES:	\$2,626.09
CITY OF PORTLAND BONDS	32.21
METRO BONDS	52.24
MULTNOMAH COUNTY BONDS	25.20
TRI-MET TRANSPORTATION BONDS	14.68
PORTLAND COMM COLLEGE BONDS	58.46
BONDS AND MISC TAXES:	\$182.79
2010-11 TAX (Before Discount)	\$4,006.90

Example Property Tax Bill (In Compression)

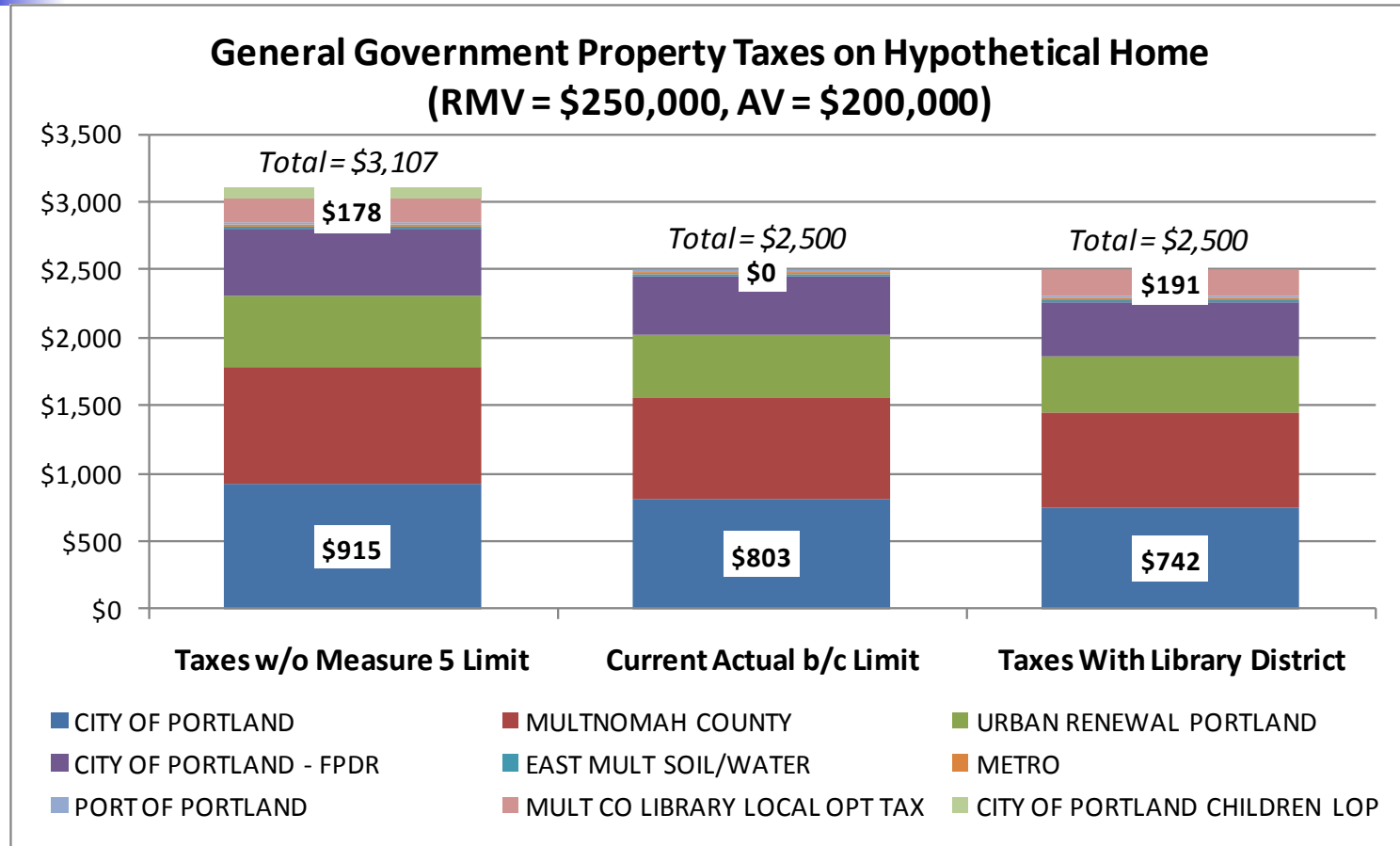
VALUES:	LAST YEAR	THIS YEAR
MARKET VALUES:		
LAND	155,000	
STRUCTURE	217,720	
TOTAL RMV VALUE	372,720	241,000
TAXABLE VALUES:		
ASSESSED VALUE	178,610	183,960
PROPERTY TAXES:	\$3,902.19	\$4,006.90

Measure 5 General Government Limit =
\$2,410 so local option levies are
compressed

2010-11 CURRENT TAX BY DISTRICT:

MULTNOMAH ESD	76.03
PORTLAND COMMUNITY COLLEGE	46.56
PORTLAND PUBLIC SCHOOL	867.90
PORTLAND PUBLIC SD LOC OPTION	207.53
EDUCATION TAXES:	\$1,198.02
PORT OF PORTLAND	11.76
CITY OF PORTLAND	760.09
METRO	16.13
EAST MULT SOIL & WATER CD	17.26
MULTNOMAH COUNTY	---
CITY OF PORTLAND CHILD LOC OP	0
MULT CO LIBRARY LOCAL OPT TAX	0
PORTLAND FIRE/POLICE PENSION	437.60
URBAN RENEWAL - PORTLAND	445.67
GENERAL GOVERNMENT TAXES:	\$ 2,410
CITY OF PORTLAND BONDS	32.21
METRO BONDS	52.24
MULTNOMAH COUNTY BONDS	25.20
TRI-MET TRANSPORTATION BONDS	14.68
PORTLAND COMM COLLEGE BONDS	58.46
BONDS AND MISC TAXES:	\$182.79
2010-11 TAX (Before Discount)	\$4,006.90

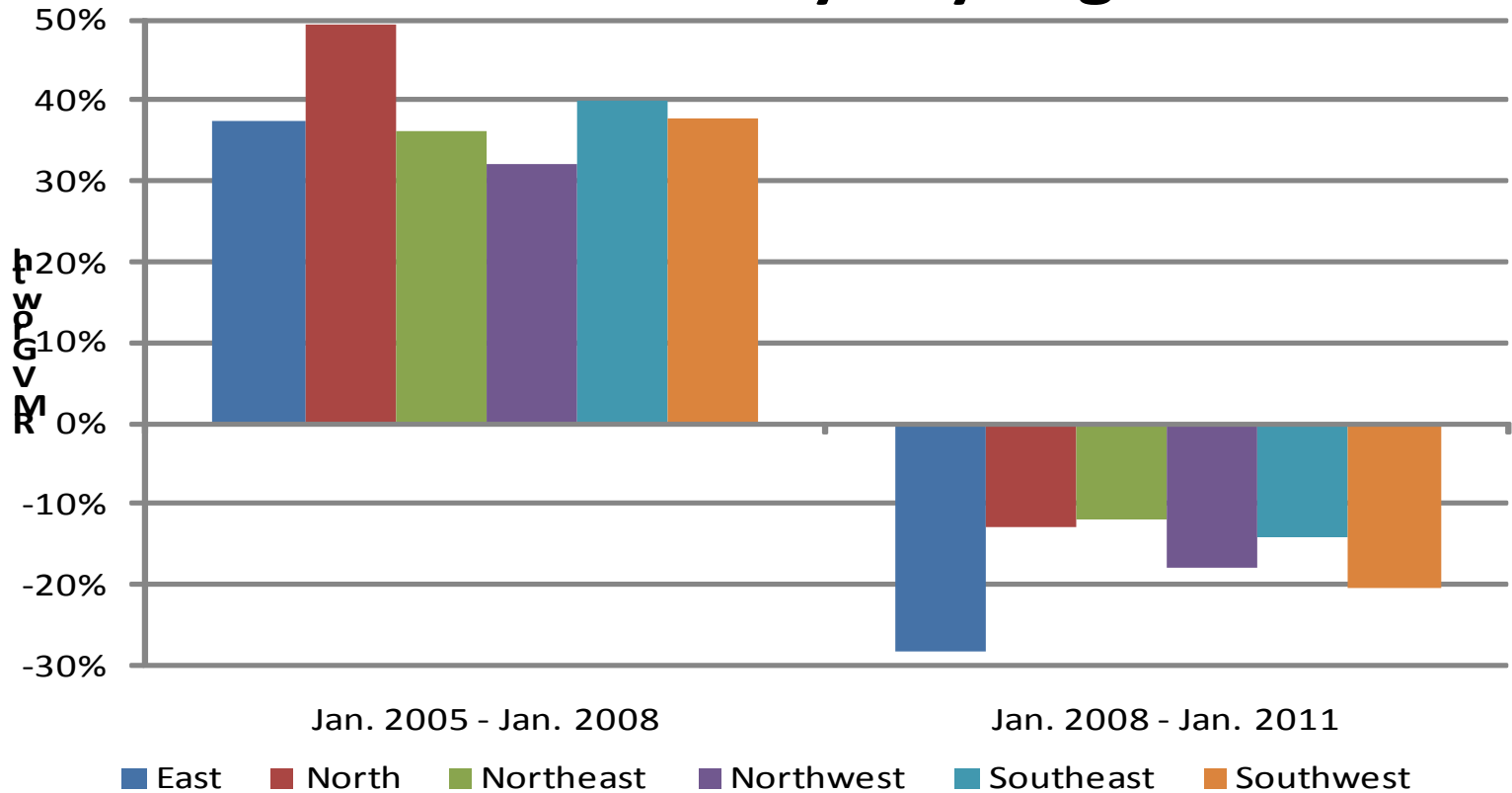
How Compression Impacts Property Taxes



Boom vs. Bust

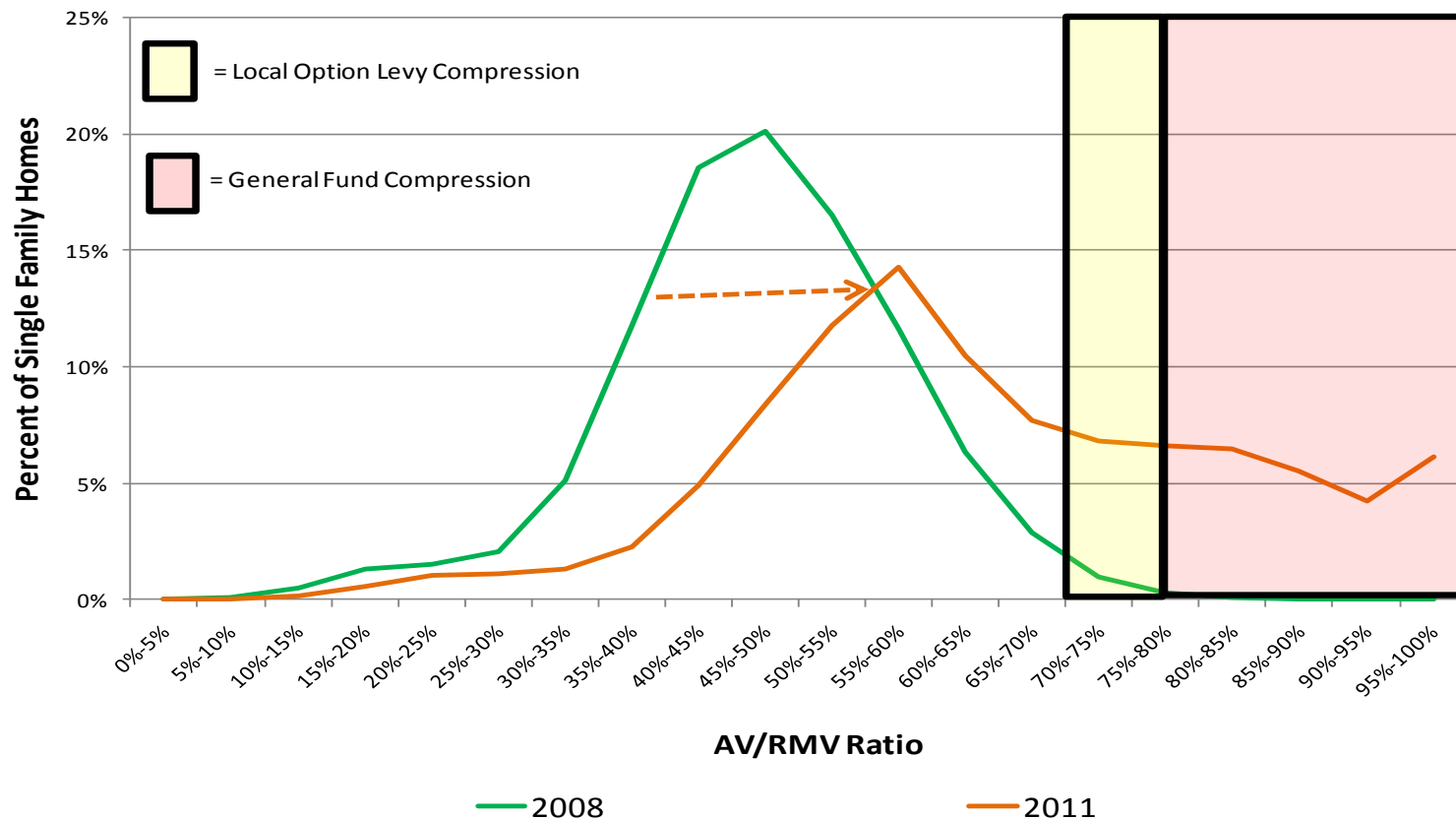
(Compiled by Zip Code)

Changes in Single Family Home Real Market Values by City Region



The Impact of Falling Real Market Values

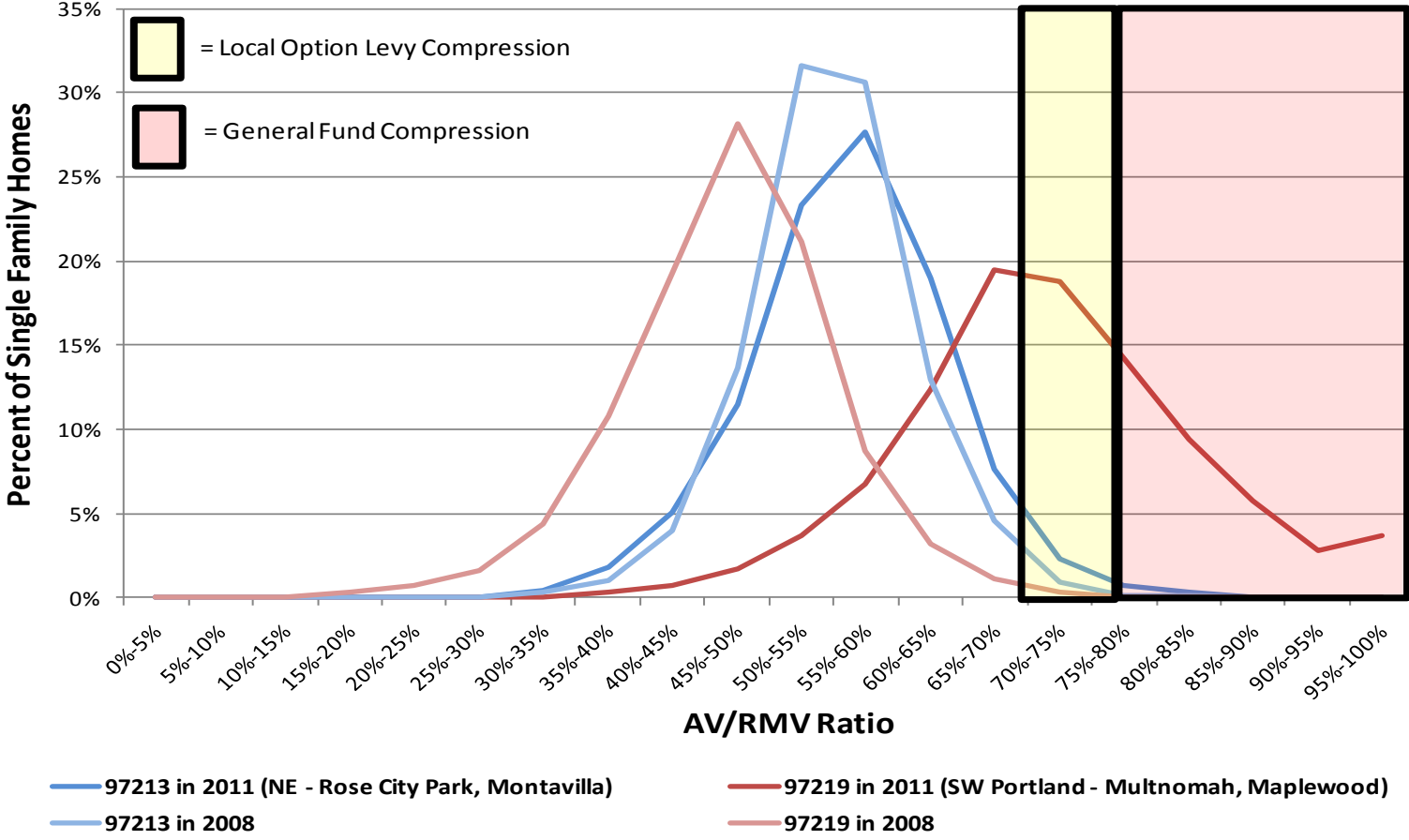
Distribution of AV/RMV Ratio for Single Family Homes



Note: In 2008, only 1.5% of Single Family Homes in Portland was in compression. In 2011, 35.9% were in compression. Due to compression, Portland's Children's Levy received less than 60% of what the citywide assessed value times the tax rate would yield.

Where Compression is (and is not) Occurring

Distribution of AV/RMV Ratio for Single Family Homes in Two Zip Codes





Contact Information

Josh Harwood
City of Portland
503-823-6954

josh.harwood@portlandoregon.gov
www.portlandonline.com

