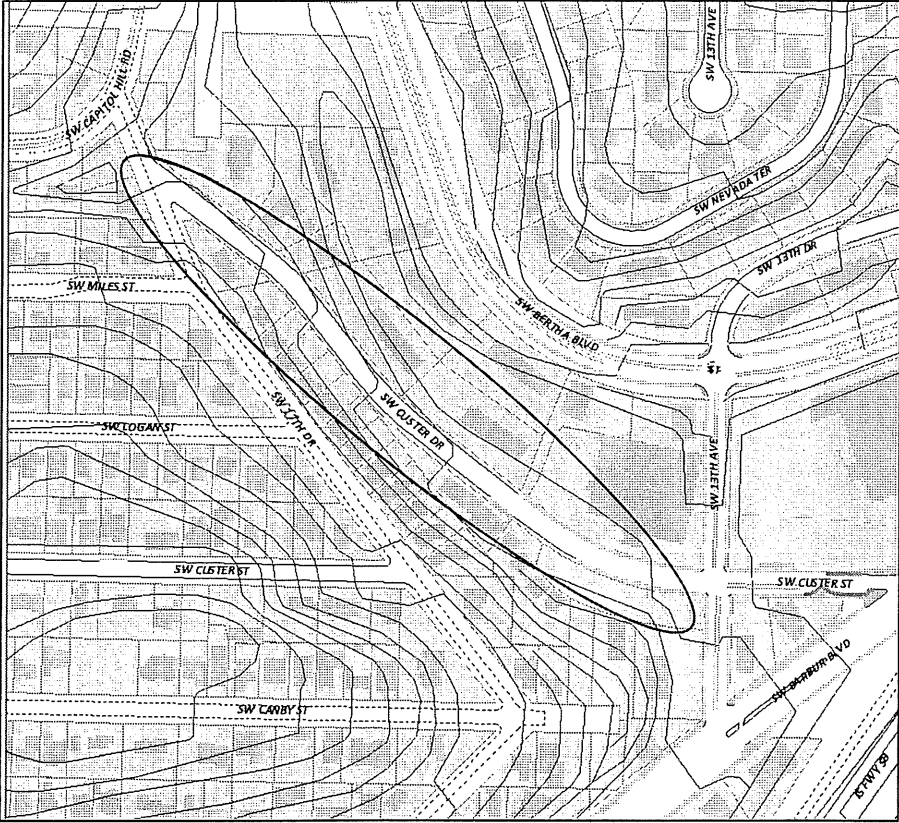


SW Corridor Projects

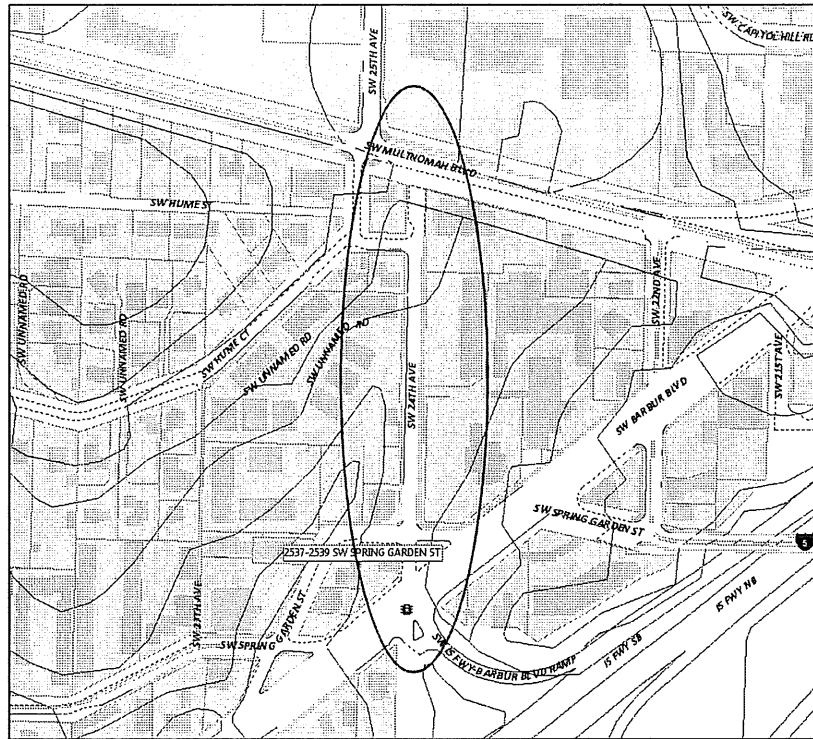
SW Custer Dr: Capitol Hill Rd to 13th Ave Sidewalk infill



Estimate assumptions/scope

- Project limits estimated: SW Custer from SW 13th Ave to SW 17th Ave
- 7ft wide curb tight sidewalk infill on the north side of SW Custer (The sidewalk near SW 17th may need to be changed to 5ft width depending on the slope).
- Estimated Cost: \$365,000

SW 24th / 25th Ave: Multnomah Blvd to Barber Blvd Sidewalk infill/ Bikeway

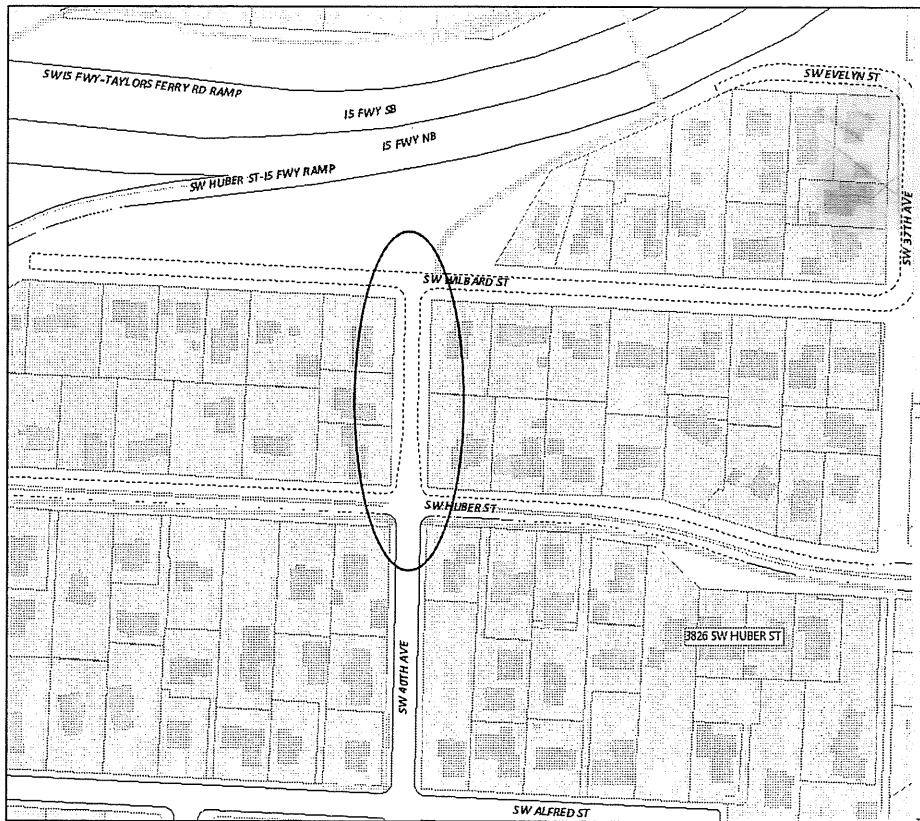


Estimate assumptions/scope

- Project limits estimated: SW 24th, 25th, and Hume from SW Multnomah Blvd to SW Barber Blvd
- Assumed a 7.5 ft wide curb tight sidewalk on SW 25th and SW Hume. A design exception would be required.
- Assume: No sidewalk on east side for SW 24th from SW Spring Garden to SW Barber Blvd due to feasibility issues.

Estimated Cost: \$555,000

**SW 40th Ave: Huber to Wilbard (proposed contingency project)
Sidewalk infill and Rapid Flash Beacon (Only do RFB if budget is tight)**



Estimate Assumptions/scope

- Project limits estimated: SW 40th: Huber to Wilbard
- 11ft wide curb tight sidewalk along eastside of SW 40th Ave.
- 6ft tall wall required on south end of sidewalk due to grading issue.
- Temporary Construction easement needed for the two properties but not included in the estimate.
- Assumed project will be part of larger project when estimate Project Management and Engineering.
- Included in estimate: Rapid flash beacon across SW Huber St.

Estimated Cost: \$610,000